

## 10 Gigabit Ethernet Server Adapters

Intel's fastest connection for high-performance servers.

Ideal for transferring large data blocks in:

- Storage clusters and e-mail, database and backup servers
- CAD/CAM nodes, modeling and graphics
- Data modeling and simulations
- Financial forecasting
- Video editing and digital imaging
- Network backbones

For **CX4 copper** (up to 15 m), specify the Intel® PRO/10GbE CX4 Server Adapter.<sup>4</sup>

For **medium reach** in multi-mode fiber (up to 300 m), specify the Intel® PRO/10GbE SR Fiber Server Adapter.

For **long reach** in single-mode fiber (up to 10 km), specify the Intel® PRO/10GbE LR Fiber Server Adapter.

## PCI Express\* Adapters for Gigabit Ethernet

Enhance Gigabit Ethernet performance with a broad selection of PCI Express adapters for servers, workstations and desktops.

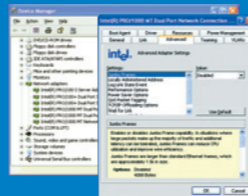
- **Reliable**, proven 5th generation Gigabit Ethernet technology from Intel.
- **Scalable** PCI Express interface provides dedicated I/O bandwidth for networking.
- **Quick** and comprehensive access and management with the new Intel® PROSet for Microsoft® Device Manager software.
- **Selection** of dual-port and single-port adapters for both fiber and copper.
- **RoHS-compliant**,<sup>1</sup> **lead-free**<sup>2</sup> technology for use in worldwide markets.



## Quick and Easy Adapter Management

Get point-and-click power over individual adapters, advanced adapter features, connection teaming, even VLAN configuration, with Intel® PROSet for Microsoft® Device Manager.

- **New, convenient** access to Intel® PROSet Utility, now integrated in Microsoft® Device Manager.
- **Simple, integrated tools** make it easy to manage and troubleshoot Ethernet connections in both servers and client computers.
- **Supports multi-vendor teaming** for adapter compatibility with most on-board connections.



## Intel® PRO Server and Desktop Adapters

Product Selection Guide



Intel® PRO  
Network Connections



## Intel® PRO Server and Desktop Adapters

Connectivity you can count on.

**Compatibility tested** for trouble-free interoperability with network infrastructure elements.

**Broad selection** from 10/100 Mbps to 10 Gbps, for copper or fiber, from PCI to PCI Express\*, in single- to quad-port configurations.

**Performance and reliability** backed by more than a decade of network connectivity experience and Intel worldwide customer support.

**Easy installation and management** with Intel® PROSet Utility for Microsoft® Device Manager and other tools.

**Worldwide availability** and environmentally friendly for compliance with global market requirements.

## Multi-Port Gigabit Server Adapters

Increase uptime, scalability and performance by putting up to four Gigabit ports into one server slot.

- **Conserve server slots** with a selection of dual- and quad-port Intel® PRO Server Adapters for flexible network connectivity.
- **Increase reliability and performance** by using each port for separate network segments, or team ports together for automatic failover and scalable server links.
- **Simplify multi-port link aggregation**, adaptive load balancing and fault tolerance with Intel® Advanced Network Services software for connection teaming.
- **Easy connection management** with Intel® PROSet for Microsoft® Device Manager software.
- **Supports multi-vendor teaming** for adapter compatibility with most on-board connections.



© 2005, Intel Corporation. Intel is a trademark or registered trademark of Intel Corporation or its subsidiaries in the United States and other countries. All rights reserved. Specifications are subject to change without notice.

<sup>1</sup>Other names and brands may be claimed as the property of others.

Printed in USA/1105/TS/PMS/PP/35K

252454-008US

<sup>4</sup>Available November 2005.

Platform	SERVER / WORKSTATION														DESKTOP					
Speed/Port	10Gbps - Fiber		10Gbps - Copper	1000Mbps - Fiber					10/100/1000Mbps - Copper						10/100Mbps - Copper		10/100/1000Mbps - Copper		10/100Mbps - Copper	
Brand Name	Intel® PRO/10GbE LR Server Adapter	Intel® PRO/10GbE SR Server Adapter	Intel® PRO/10GbE CX4 Server Adapter	Intel® PRO/1000 PF Dual Port Server Adapter	Intel® PRO/1000 PF Server Adapter	Intel® PRO/1000 MF Dual Port Server Adapter	Intel® PRO/1000 MF Server Adapter	Intel® PRO/1000 MF Server Adapter (LX)	Intel® PRO/1000 XF Server Adapter	Intel® PRO/1000 PT Dual Port Server Adapter	Intel® PRO/1000 PT Server Adapter	Intel® PRO/1000 MT Quad Port Server Adapter	Intel® PRO/1000 MT Dual Port Server Adapter	Intel® PRO/1000 MT Server Adapter	Intel® PRO/100 S Dual Port Server Adapter	Intel® PRO/100 S Server Adapter	Intel® PRO/1000 PT Desktop Adapter	Intel® PRO/1000 GT Desktop Adapter*	Intel® PRO/100 S Desktop Adapter	Intel® PRO/100 M Desktop Adapter
Product Code	PXLA8591LR	PXLA8591SR	PXLA8591CX4	EXPI9402PF EXPI9402PFBLK	EXPI9400PF EXPI9400PFBLK	PWLA8492MF PWLA8492MFBLK5	PWLA8490MF PWLA8490MFBLK5	PWLA8490LX PWLA8490LXBLK5	PWLA8490XF PWLA8490XFPAK5	EXPI9402PT EXPI9402PTBLK	EXPI9400PT EXPI9400PTBLK	PWLA8494MT PWLA8494MTBLK5	PWLA8492MT PWLA8492MTBLK5	PWLA8490MT PWLA8490MTBLK5	PILA8472C3 PILA8472C3PAK5	PILA8470C3 PILA8470C3PAK5	EXPI9300PT EXPI9300PTBLK EXPI9300PTLPLBLK <sup>5</sup>	PWLA8391GT PWLA8391GTBLK PWLA8391GTLBLK <sup>6</sup>	PILA8460C3 PILA8460C3BLK	PILA8460M PILA8460MMLK20
Ethernet Controller(s)	Intel® 82597EX	Intel® 82597EX	Intel® 82597EX	Intel® 82571EB	Intel® 82572EI	Intel® 82546GB	Intel® 82545GM	Intel® 82545GM	Intel® 82544EI	Intel® 82571EB	Intel® 82572EI	Two Intel® 82546EB	Intel® 82546GB	Intel® 82545GM	Two Intel® 82550GY	Intel® 82550EY	Intel® 82572EI	Intel® 82541PI	Intel® 82550EY	Intel® 82551QM
Connector & Cable Medium	SC Fiber Optic	LC Fiber Optic	CX4 Copper	LC Fiber Optic	LC Fiber Optic	LC Fiber Optic	LC Fiber Optic	LC Fiber Optic	SC Fiber Optic	RJ-45 Copper	RJ-45 Copper	RJ-45 Copper	RJ-45 Copper	RJ-45 Copper	RJ-45 Copper	RJ-45 Copper	RJ-45 Copper	RJ-45 Copper	RJ-45 Copper	RJ-45 Copper
Cabling Type	SMF 9 µm up to 10 km	MMF 62.5/50 µm up to 300 m	CX4 up to 15 m	MMF 62.5/50 µm up to 275 m	MMF 62.5/50 µm up to 275 m	MMF 62.5/50µm up to 275 m	MMF 62.5/50 µm up to 275 m	SMF 9 µm up to 10 km MMF 62.5/50 µm up to 550 m	MMF 62.5/50 µm up to 550 m	Category-5 up to 100 m	Category-5 up to 100 m	Category-5 up to 100 m	Category-5 up to 100 m	Category-5 up to 100 m	Category-5 up to 100 m	Category-5 up to 100 m	Category-5 up to 100 m	Category-5 up to 100 m	Category-5 up to 100 m	Category-5 up to 100 m
Slot Type & Maximum Bus Speed	PCI-X, 133 MHz	PCI-X, 133 MHz	PCI-X, 133 MHz	PCI Express, 2.5 GHz/Lane	PCI Express, 2.5 GHz/Lane	PCI-X, 133 MHz	PCI-X, 133 MHz	PCI-X, 133 MHz	PCI-X, 133 MHz	PCI Express, 2.5 GHz/Lane	PCI Express, 2.5 GHz/Lane	PCI-X, 133 MHz	PCI-X, 133 MHz	PCI-X, 133 MHz	PCI, 66 MHz	PCI, 66 MHz	PCI Express, 2.5 GHz/Lane	PCI, 66 MHz	PCI, 66 MHz	PCI, 66 MHz
Ports	Single Port	Single Port	Single Port	Dual Port	Single Port	Dual Port	Single Port	Single Port	Single Port	Dual Port	Single Port	Quad Port	Dual Port	Single Port	Dual Port	Single Port	Single Port	Single Port	Single Port	Single Port
Slot Width	64-bit	64-bit	64-bit	x4 lane	x4 lane	32/64-bit	32/64-bit	32/64-bit	32/64-bit	x4 lane	x1 lane	64-bit	32/64-bit	32/64-bit	32/64-bit	32-bit	x1 lane	32-bit	32-bit	32-bit
Supported Slot Height(s)	Full Height	Full Height	Full Height	Full Height <sup>3</sup>	Full Height <sup>3</sup>	Full Height & Low Profile	Full Height & Low Profile	Full Height & Low Profile	Full Height	Full Height <sup>3</sup>	Full Height & Low Profile	Full Height	Full Height & Low Profile	Full Height & Low Profile	Full Height	Full Height	Full Height <sup>5</sup>	Full Height <sup>5</sup>	Full Height	Full Height
RoHS-Compliant <sup>1</sup>	Yes (Server Exemption)	Yes (Server Exemption)	Yes (Server Exemption)	Yes (Lead-Free Technology) <sup>2</sup>	Yes (Lead-Free Technology) <sup>2</sup>	Yes (Server Exemption)	Yes (Server Exemption)	Yes (Server Exemption)	Yes (Server Exemption)	Yes (Lead-Free Technology) <sup>2</sup>	Yes (Lead-Free Technology) <sup>2</sup>	Yes (Server Exemption)	Yes (Server Exemption)	Yes (Server Exemption)	NA	Yes (Server Exemption)	Yes (Lead-Free Technology) <sup>2</sup>	Yes (Lead-Free Technology) <sup>2</sup>	NA	NA

<sup>5</sup>EXPI9300PTLPLBLK is Low Profile

<sup>6</sup>PWLA8391GTLBLK is Low Profile

Connectivity you can count on.

For additional product information, please visit: [www.intel.com/network/connectivity](http://www.intel.com/network/connectivity)



<sup>1</sup>Lead and other materials banned in the RoHS Directive are either (1) below all applicable substance thresholds as proposed by the EU or (2) an approved/pending exemption applies.

<sup>2</sup>Lead has not been intentionally added, but lead may still exist as an impurity below 1000 ppm or an approved RoHS exemption applies. RoHS compliance with allowable exemptions to be officially verified by the end of 2005.

<sup>3</sup>Low-profile brackets will be included with this product in early 2006.